



The Colourful Canyon

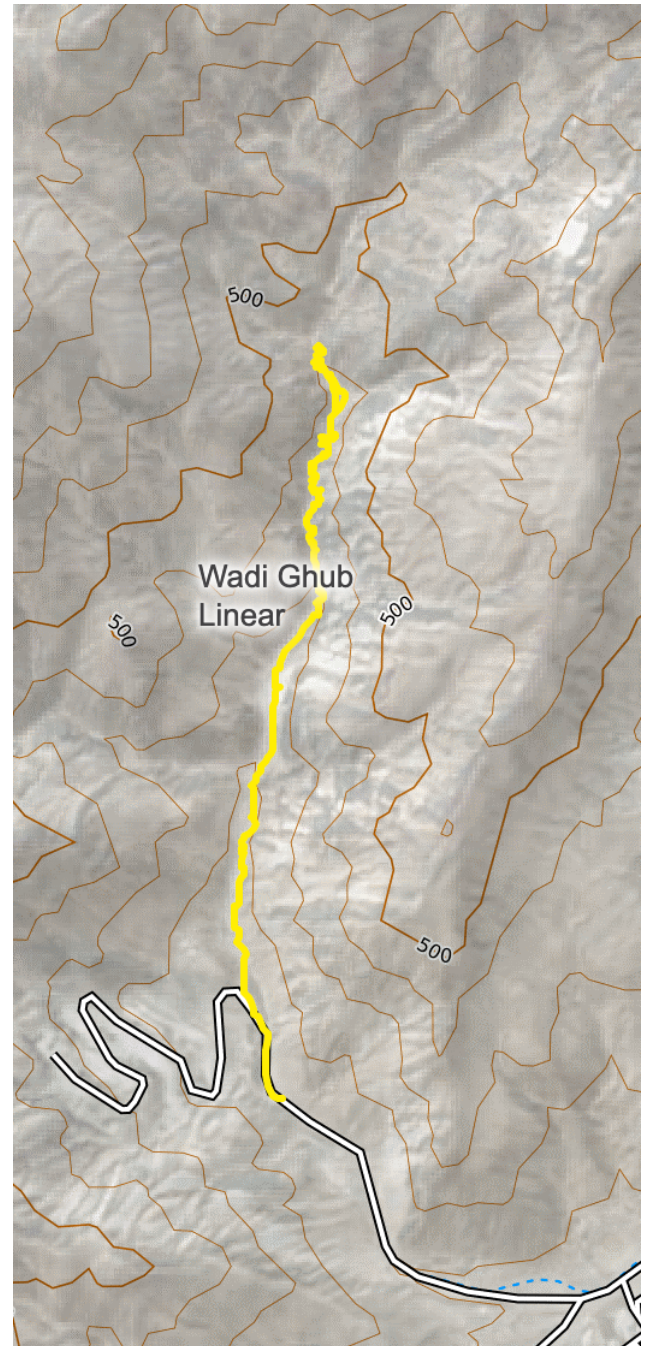
Distance 5km
Ascent 366m
Descent 366m

With big boulders and colourful rocks, our Colourful Canyon Trek takes us through some one of the most beautifully colourful mountain valleys, filled with attractive color gradients and layers of rocks all around you.

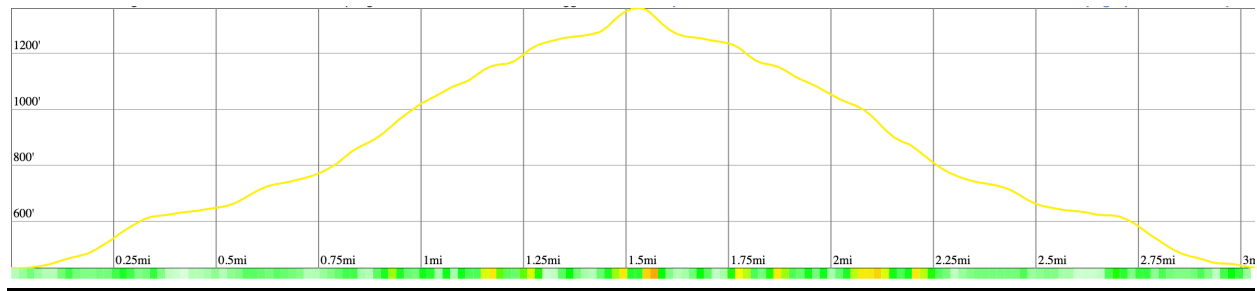
There is minimal shade, and the trail has loose gravel on some stretches of the trail. The wadi offers beautiful views with colorful rock formations.

Within 30 mins, you will be right in front of the famously colourful rock formations that some people call the spectrum or rainbow valley. Given its unique look and feel.

You will experience some boulder climbing, and scrambling over smoothed rocks. Being part of a group will help you to navigate safely up, over and around these obstacles.



Elevation Profile



What to Expect

Our qualified and experienced guides will lead you at a pace suitable for the group, all while educating you on local history, flora and fauna. You can expect to have the whole trek completed within 4 hours.

What to Bring

Backpack

Minimum 2L water

Hiking shoes, with a good tread pattern, boots are preferable

Snacks

Camera so you can immortalise the memories